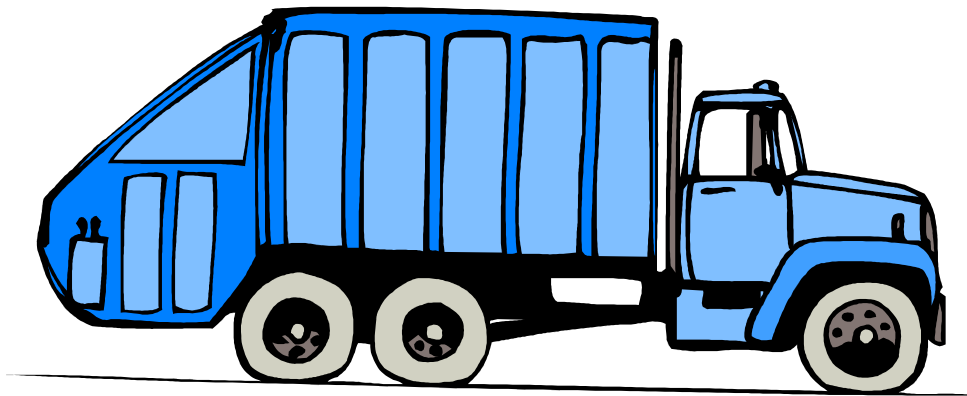


ENCLOSURE STANDARDS
AND
REGULATIONS



Updated
1-25-2011

CITY OF SEDRO-WOOLLEY SOLID WASTE DIVISION DUMPSTER AND RECYCLING
CONTAINERS
LOCATION, PAD AND ENCLOSURE STANDARDS

Prior to construction coordinate with Leo Jacobs, Solid Waste Division Manager.
Phone 360-855-1884 or FAX 360-855-9024.

1. **ENCLOSURE LOCATION STANDARDS:** All container locations including rollout areas shall provide for direct and unobstructed access by Solid Waste equipment and personnel. All enclosures shall not be located within 5 feet of combustible walls, openings, or combustible roof eaves lines. A minimum overhead height clearance of 25 feet is required to safely move containers in and out of the enclosure. The Solid Waste and Fire Department shall approve all proposed enclosure locations prior to issuance of a building permit. **PLEASE NOTE ALL enclosures must drain to sanitary sewer:** Gates in the open position shall not infringe on traffic aisles. The truck that services the enclosure has an outside-turning radius of approximately 32.5 feet. The truck is 32 feet in length and must be able to line up directly with the enclosure. (SEE ATTACHED)
2. **ENCLOSURE REQUIREMENTS:** All pads shall be enclosed by a minimum of 6-foot sight obscuring fence to screen and retain the container on the pad site as well as contain and control blowing debris. Gates are not preferred and extra charges may apply if installed. If gates are Necessary, then the gates shall have the ability to be pinned in a 180-degree open position. A 4-foot clearance must be maintained between the containers (s) and any sidewalks. It shall be the responsibility of the customer to keep the enclosure in an acceptable sanitary condition including the area around the enclosure. Enclosures provided for solid waste containers shall be used only for solid waste containers. Recyclables will be in separate enclosure.
3. **PAD SIZE AND CONSTRUCTION STANDARDS FOR 1-8 YARD CONTAINERS:** Enclosures shall have a minimum opening width of 15 feet and minimum depth of 20 feet. All pad and rollout areas shall be constructed of concrete with a thickness to be not less than 6 inches. All pads shall be level. All pads top surface elevation shall be even with parking a lot or driveway top surface elevation.
4. **PAD SIZE AND CONSTRUCTION STANDARDS FOR 10-40 YARD CONTAINERS AND PRIVATELY OWNED COMPACTORS:** Enclosures shall have a minimum opening width of 15 feet and minimum depth of 30 feet. All pad areas shall be constructed of concrete with a thickness to be not less than 6 inches. All pads shall be level. All pads top surface elevation shall be even with parking a lot or driveway top surface elevation. **ALL PRIVATELY OWNED COMPACTORS MUST BE ABLE TO BE PICKED UP BY CHAIN STLYE HOIST LIFT SYSTEMS.**
5. **RECYCLABLES:** According to WAC 51-20-009, the applicant shall set aside an area on-site for the collection of recyclable materials. “The storage area shall be designed to meet the needs of the occupancy, the efficiency of pickup, and shall be available to the occupants and haulers”. RCW 19.27.074, RCW 19.27.020, RCW 19.27.031. **Please call if you need more info on your project we can assess your needs and recommend service levels. 360-855-1884**

Approximate Solid Waste Generation Guidelines

| Classification | Building Types | Quantities of Waste Generated |
|-------------------------|--|---|
| Apartments | Singles or no children | 1-1 1/2 cu. yd. per unit per month |
| | Family | 1 1/2 -2 cu. yd per unit per month |
| Commercial Buildings | Office | 1 cu. yd. per 10,000 sq. ft. per day |
| | Department Store | 1 cu. yd. per 2,500 sq. ft. per day |
| | Shopping Centers | Varies with type of tenant handled |
| | Supermarkets | 1 cu. yd. per 1,250 sq. ft. per day |
| | Restaurants | Varies w/no. of meals served & type of food |
| | Drugstores | 1 cu. yd. per 2,000 sq. ft. per day |
| | Banks | Survey required |
| Hotel & Motels | High Occupancy | 1/2 cu. yd. per room per week + restaurants |
| | Average Occupancy | 1/6 cu. yd per room per week + restaurants |
| Warehouses | | Varies with type of activity |
| Factories | | Varies with type of activity |
| Institutions | Hospitals | 1 cu. yd. per five occupied beds per day |
| | Nursing Homes | 1 cu. yd. per fifteen persons per day |
| | Rest and Retirement Homes | 1 cu. yd. per twenty persons per day |
| Schools | Grade Schools | 1 cu. yd. per eight rooms per day |
| | High Schools | 1 cu. yd per ten rooms per day |
| | Universities | Survey required |
| ROOFING MATERIAL | COMPOSITE SHINGLES | 265 LBS PER SQUARE x PER ROOF |
| ROOFING MATERIAL | SHAKE SHINGLES | 176 LBS PER SQUARE x PER ROOF |
| ROOFING MATERIAL | FELT, NAILS, PAPER AND FLASHING | 65 LBS PER SQUARE x PER ROOF |

This information is to be used as a guideline only. The volume has been derived from nationwide averages using varying weights per cubic yard.

Conversion Table ForCubic Foot Volume (Approximately)

| | |
|--|---------------|
| Garbage Can 18" diameter x 24" deep..... | 3.6 cu. ft. |
| Garbage Can 16" diameter x 22" deep..... | 2.0 cu. ft. |
| Bushel Basket – Standard | 1.24 cu. ft. |
| Barrel U.S. Standard | 4.08 cu. ft. |
| 7-1/2 Gallons..... | 1.0 cu. ft. |
| 1 Gallon..... | 0.134 cu. ft. |
| 55-Gallon Oil Drum..... | 7.0 cu. ft. |

One Cubic Yard Equivalent:

27 cu. ft. = one cubic yard

One cubic yard is equal to 203 gallons.

One cubic yard is approximately four 55-gallon drums

One cubic yard is approximately eleven 20-gallon cans

One cubic yard is approximately seven 32-gallon cans

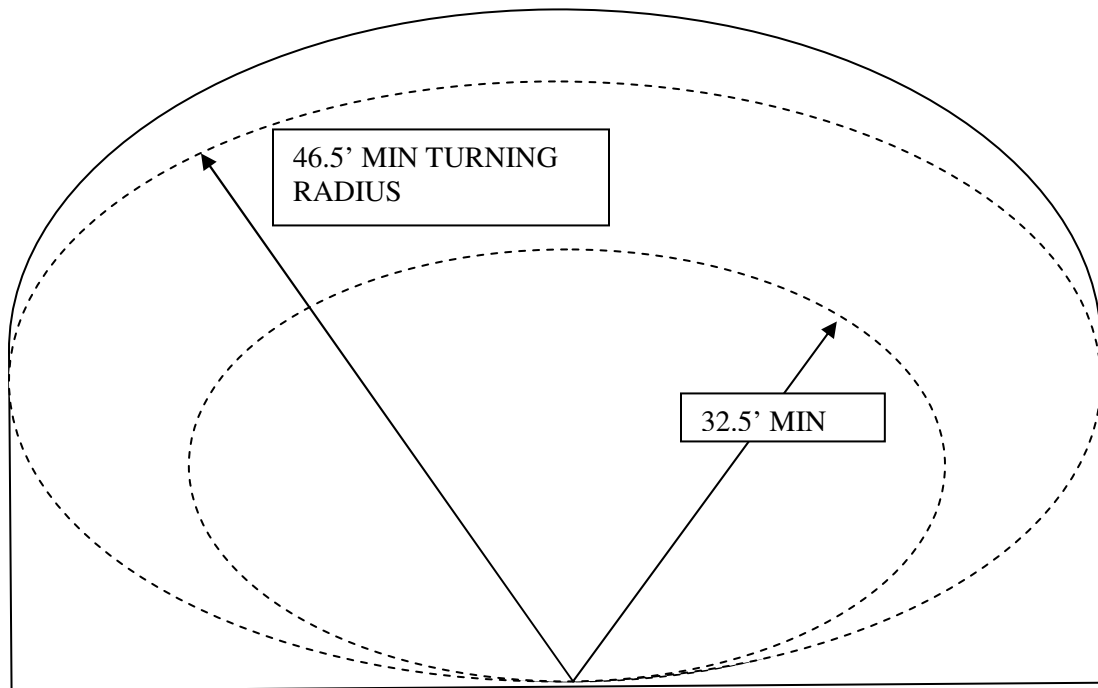
Calculation:

To find container capacity in cubic yards.

Measure Length by width by height in inches and divide by 46656. This will give you the approximate volume in cubic yards.

Where: L = Length (in feet) W = Width (in feet) H = Side Height (in feet)

MINIMUM TURNING PATH FOR GARBAGE TRUCKS

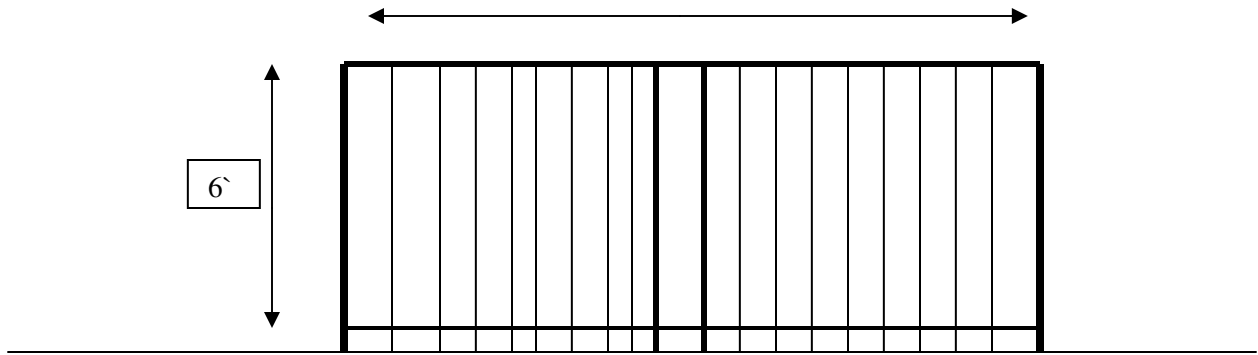


TRUCK IS APPROXIMATELY 32 FEET LONG, 8 FEET WIDE AND 13'4" IN HEIGHT.
MINIMUM OF 50' IS REQUIRED IN FRONT OF ENCLOSURE FOR TRUCK MANUVERING.

Scale is approx. 1" = 20'

ILLUSTRATIONS

15'

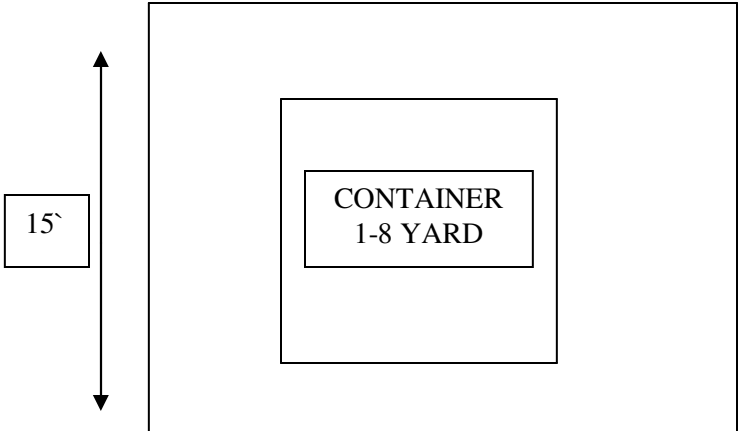


PARKING LOT

FRONT ELEVATION
1/4" = 1'



15'

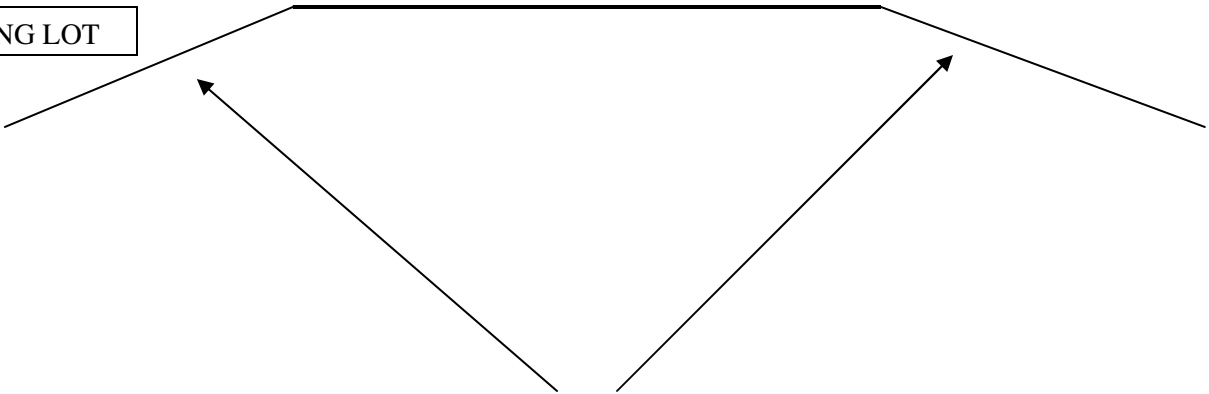


15'

6' HIGH CYCLONE OR BRICK FENCE IS RECOMENED.

FRONT ELEVATION
1/4" = 1'

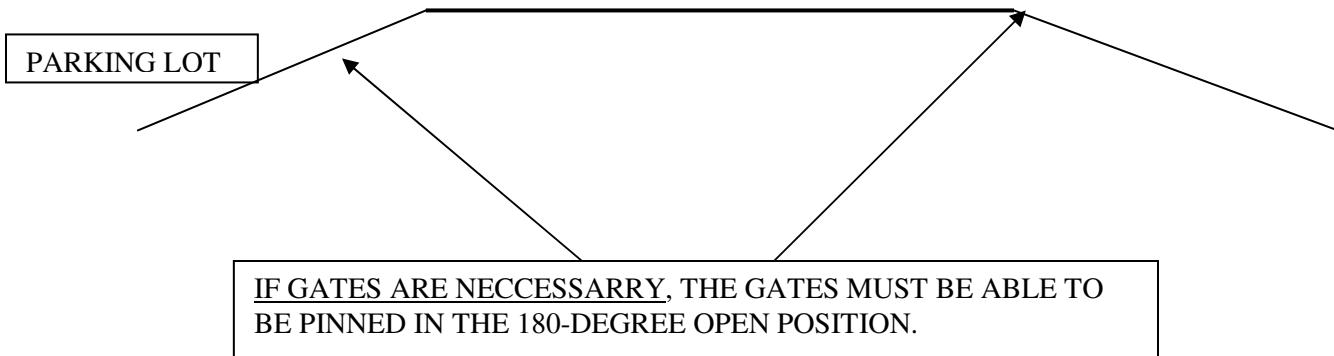
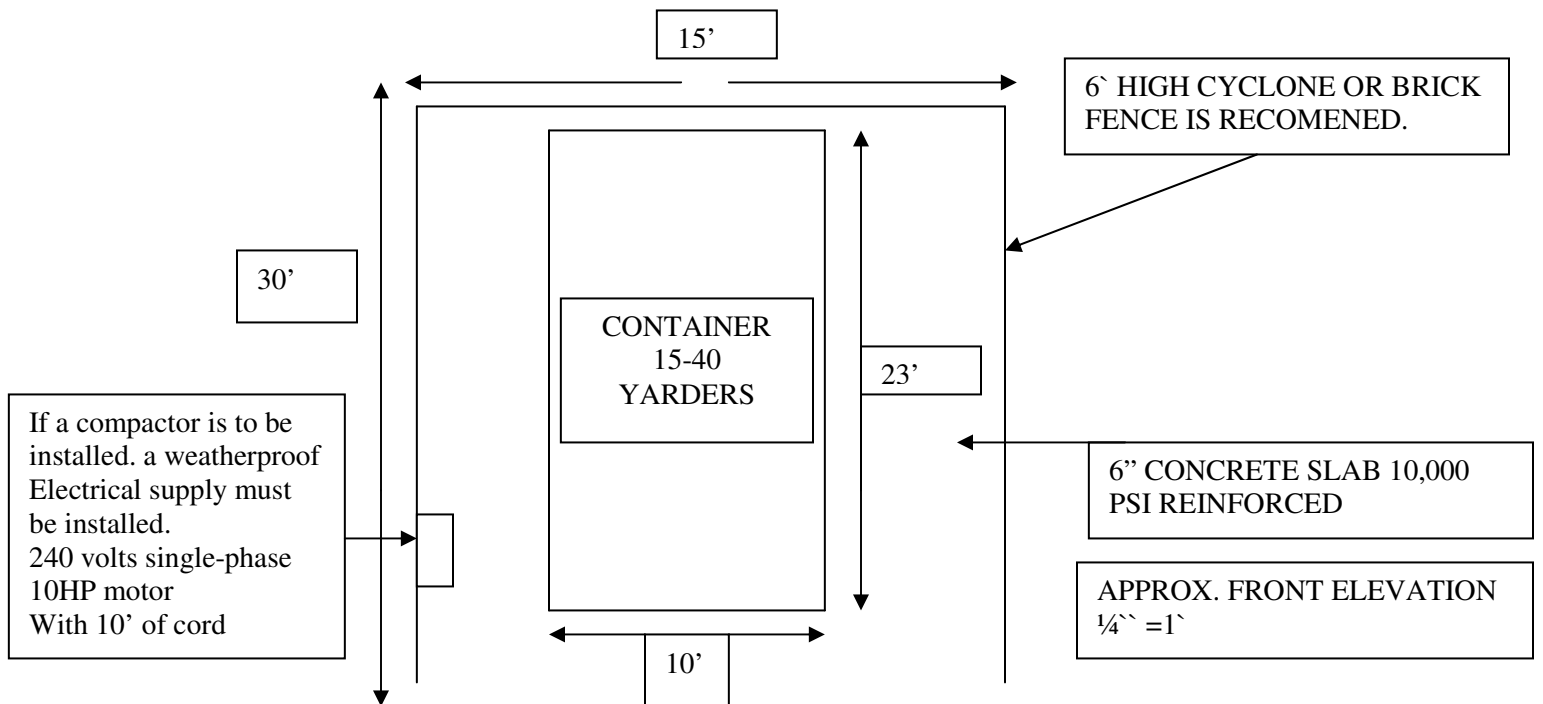
PARKING LOT



IF GATES ARE NECESSARRY, THE GATES MUST BE ABLE TO BE PINNED IN THE 180-DEGREE OPEN POSITION.

All enclosures will drain to sanitary sewer.

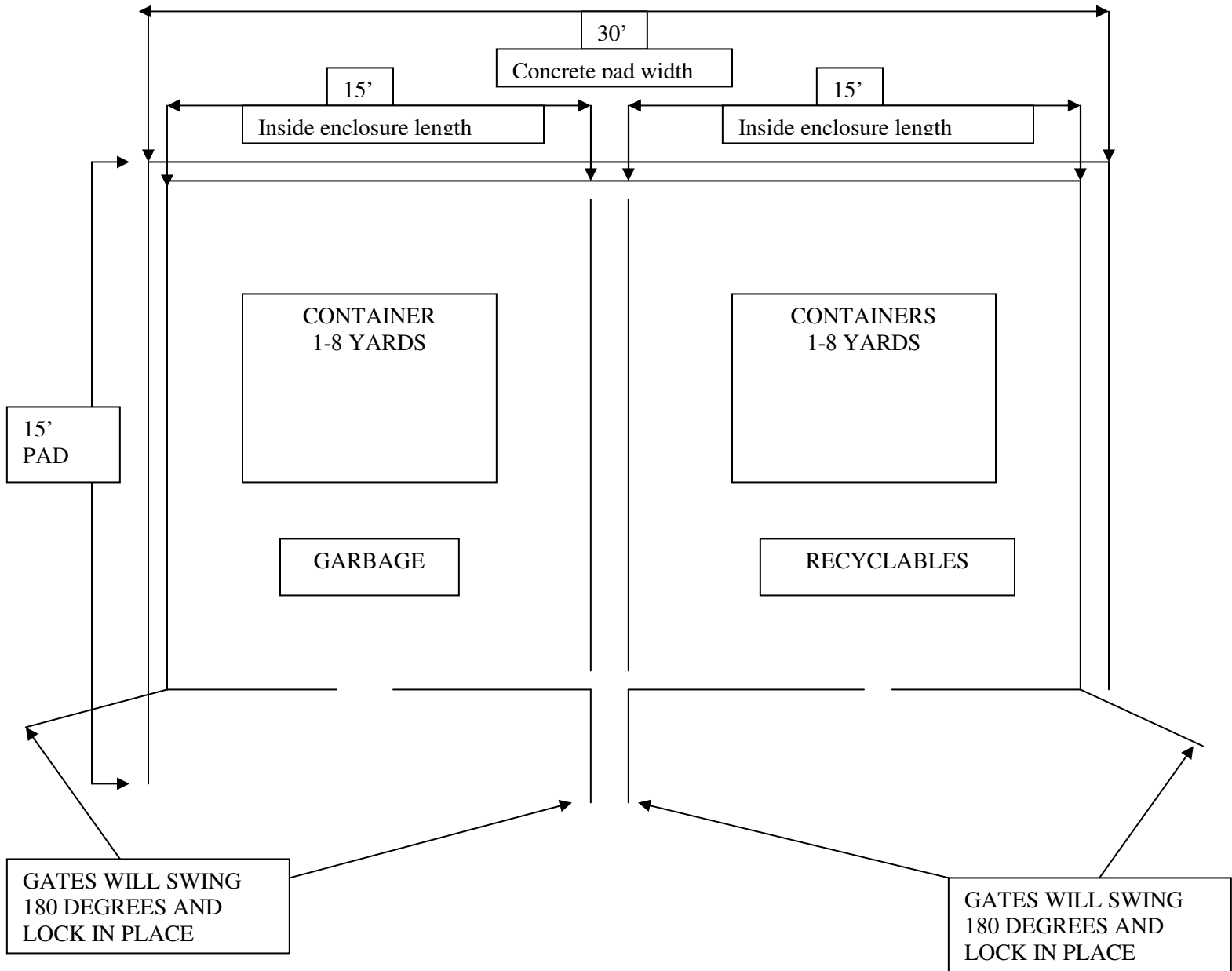
15-40 Yard Containers and Compactors



All enclosures will drain to sanitary sewer.

Ideal Trash enclosure & Recycle Enclosure

All enclosures will drain to sanitary sewer.



6" CONCRETE SLAB
10,000 PSI REINFORCED

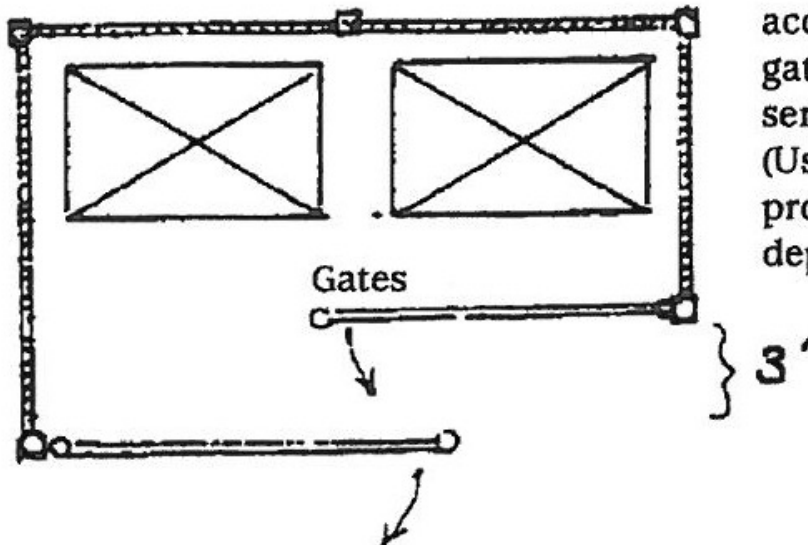
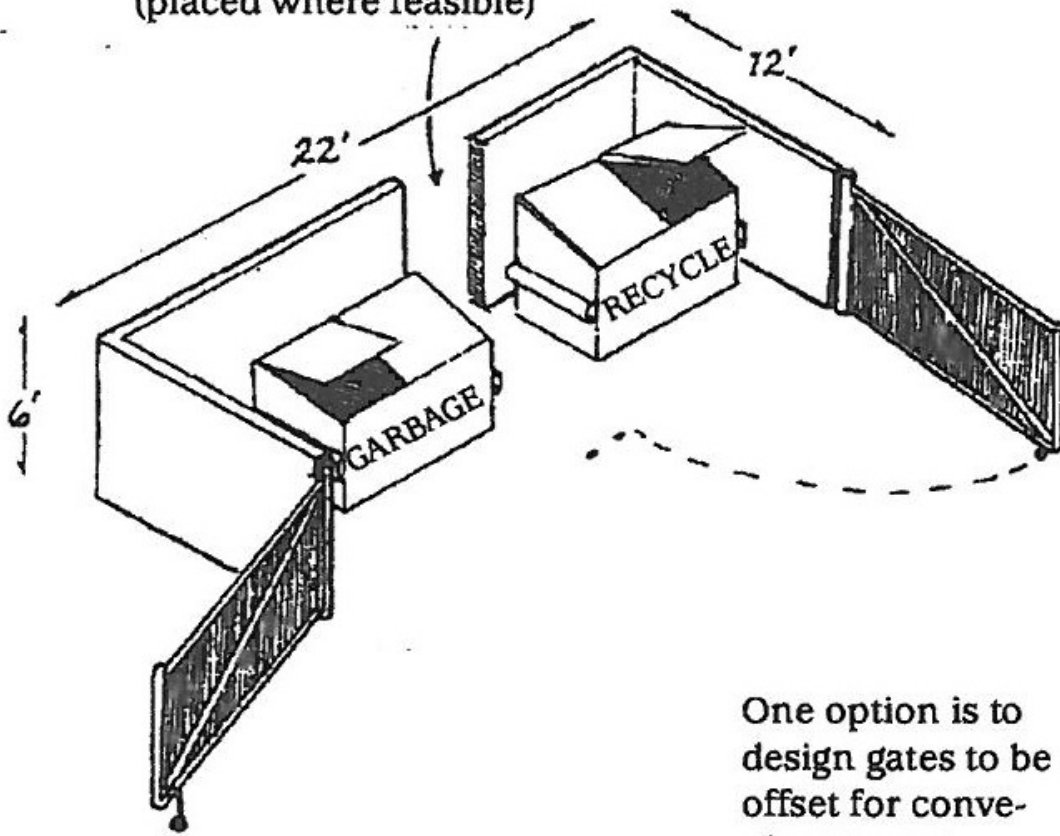
OTHER CONFIGURATIONS
WILL BE ALLOWED BY
WRITTEN APPROVAL FROM
THE
SOLID WASTE DIVISION

GATES ARE NOT NECESSARY AND OTHER WAIVERS
COULD APPLY ONLY BY WRITTEN APPROVAL FROM THE
SOLID WASTE DIVISION.

IF GATES ARE NECESSARY, THE GATES MUST BE ABLE
TO BE PINNED IN THE 180-DEGREE OPEN POSITION.

Optional Enclosure Allowed:

Optional pass-through for convenient tenant access (placed where feasible)



One option is to design gates to be offset for convenient tenant access, leaving full gate operation to service drivers. (Use only if site provides ample depth).

Types of Approaches:

